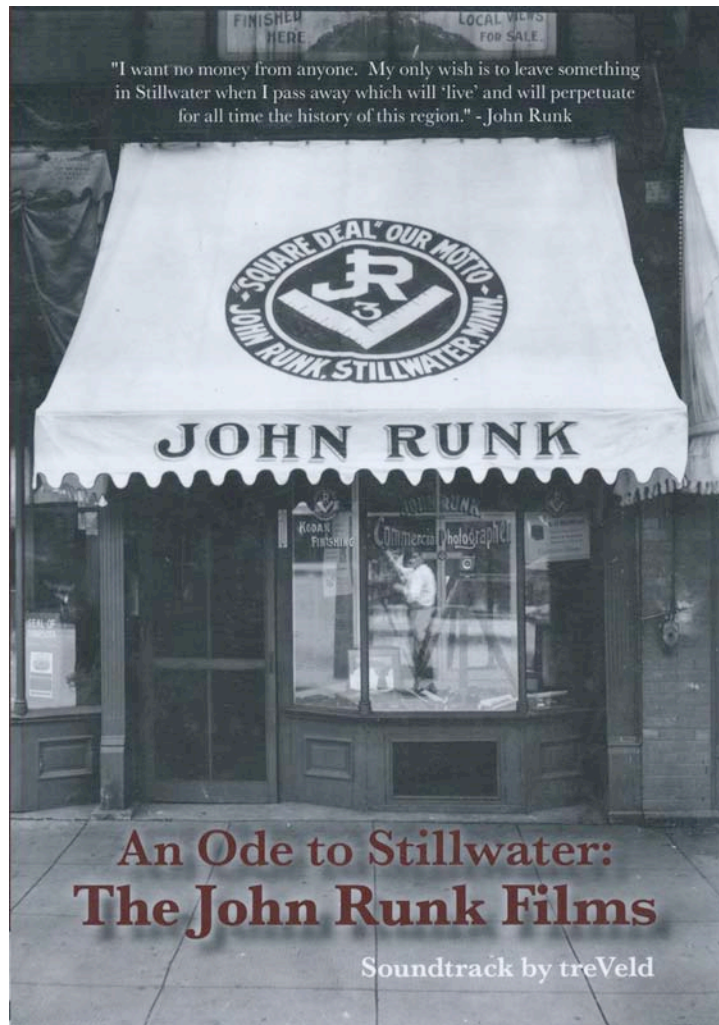


WASHINGTON COUNTY HISTORICAL SOCIETY

An Ode to Stillwater: The John Runk Films

DVD Soon to be Released



Two years ago, the Washington County Historical Society (WCHS) received an extensive collection of 8mm and 16mm motion film from the collection of John Runk, the prolific Stillwater photographer who extensively documented Washington County life during much of the 20th century.

The 48 reels of film were donated by Runk's grand-nephew, Jim Runk, who lives in Lindstrom, Minnesota. Runk donated the material to WCHS after he grew concerned about the preservation of the films. He knew WCHS was the best steward to preserve and share this rare media collection.

“This is a remarkable addition to our collection,” said WCHS Executive Director Brent Peterson. “We know of Runk’s passion for still photography, but this rare motion film collection offers the community actual moving pictures of life in Washington County and elsewhere in Minnesota during the mid 20th century,” Peterson added. “These are amazing films that will be researched and enjoyed for generations.”

Since the donation, the films have been transferred to digital media for safe-keeping and viewing. The Washington County Historical Society has also worked diligently with a film editor to create “An Ode to Stillwater: The John Runk Films,” a film about Stillwater and the St. Croix Valley.

This film is nearing completion and will soon be available for purchase. The cost of the DVD will be \$15. In addition to the release of the film, WCHS is planning a great premier event to be held late summer, early fall. Keep checking back for event details!

For more information about the new DVD, “An Ode to Stillwater: The John Runk Films,” please contact the Washington County Historical Society at information@wchsmn.org or (651) 439-5956.

Washington County Historical Society collects, preserves, and disseminates the history of the county and state of Minnesota.

Founded in 1934, the Washington County Historical Society is a private, donor-supported, nonprofit organization with more than 700 individual, family, and business members. WCHS is supported by individual gifts, memberships, earned income, and foundation grants. For more information, please visit www.wchsmn.org.